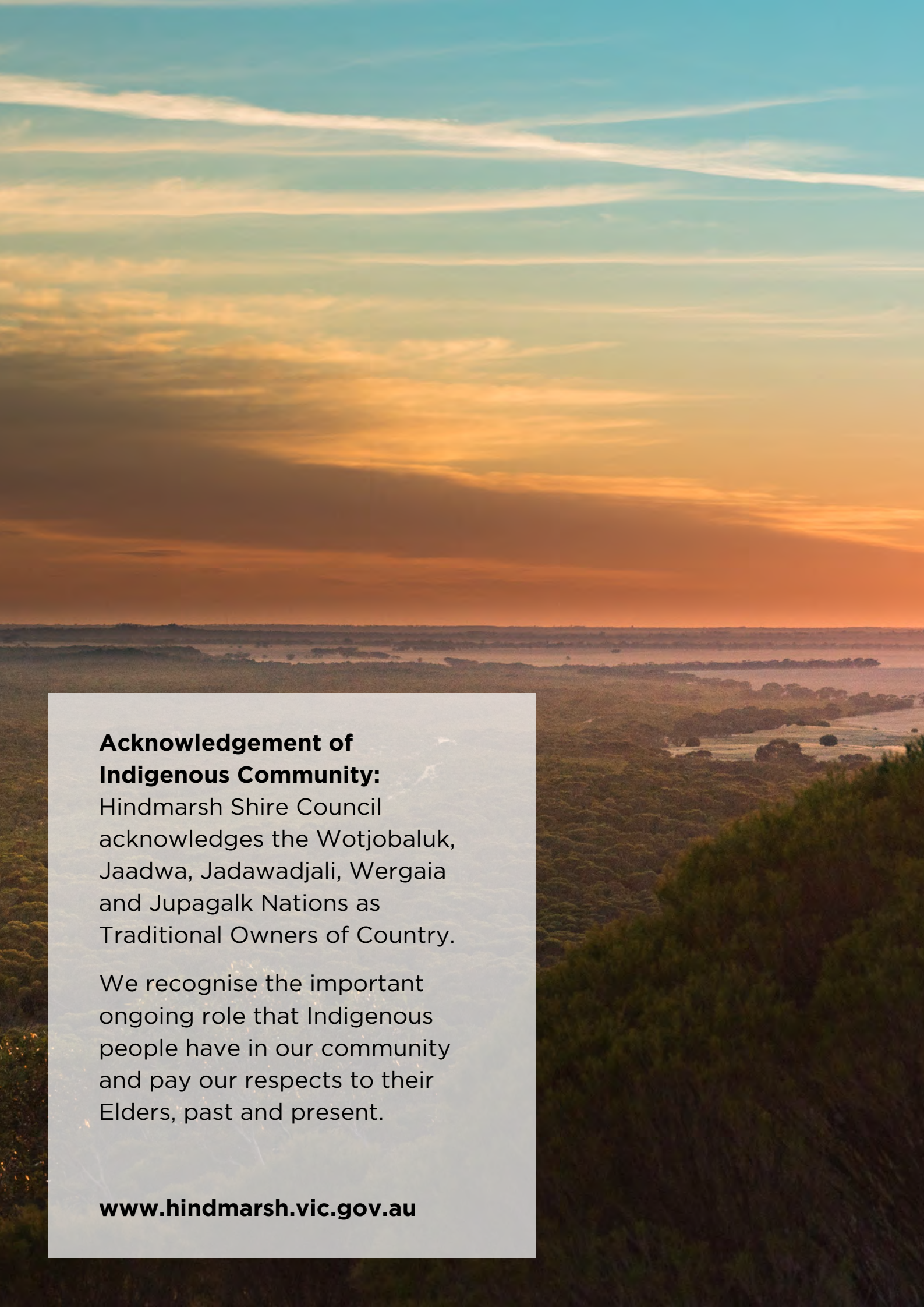


Hindmarsh Shire Council

# Community Action Plan 2024-2028

Dimboola, Jeparit, Nhill & Rainbow

*Adopted 7 February 2024*



**Acknowledgement of  
Indigenous Community:**

Hindmarsh Shire Council  
acknowledges the Wotjobaluk,  
Jaadwa, Jadawadjali, Wergaia  
and Jupagalk Nations as  
Traditional Owners of Country.

We recognise the important  
ongoing role that Indigenous  
people have in our community  
and pay our respects to their  
Elders, past and present.

[www.hindmarsh.vic.gov.au](http://www.hindmarsh.vic.gov.au)

# CONTENTS

|  |           |
|--|-----------|
| <b>Overview &amp; Summary</b>                        | <b>5</b>  |
| <b>Community Action Plan<br/>Development Process</b> | <b>9</b>  |
| <b>Snapshot of Hindmarsh Shire</b>                   | <b>11</b> |
| <b>Community Input</b>                               | <b>13</b> |
| Dimboola   | 14        |
| Jeparit  | 15        |
| Nhill  | 16        |
| Rainbow  | 17        |
| <b>Priority Projects and Action<br/>Plans</b>        | <b>21</b> |
| Strong Long Term Initiatives                         | 22        |
| Strong Short Term Initiatives                        | 25        |



# OVERVIEW & SUMMARY

## Overview

The Hindmarsh Shire 2024 - 2028 Community Action Plan is a plan developed through a consultation process between Hindmarsh Shire Council and the communities of Dimboola, Jeparit, Nhill and Rainbow during March and April 2023.

The aim of the community consultation process is to provide local communities with a forum for local initiatives and aspirations to be raised, discussed, and prioritised.

Prioritised initiatives then provide direction to Council for inclusion in Council Plans, Annual Budgets, and long-term Financial Plans enabling opportunities to seek alternative or additional funding to undertake projects as appropriate funding becomes available.

The Hindmarsh Shire 2024 - 2028 Community Action Plan is not a static document and will be reviewed on an annual basis and will evolve over the five-year period of the plan.

A collaborative effort by a range of stakeholders including individuals, community groups and organisations, Council, State and Federal Governments will be required for the plan to be successful and prioritised initiatives to be implemented.

The Hindmarsh Shire 2024 - 2028 Community Action Plan will align with other strategic Council documents including:

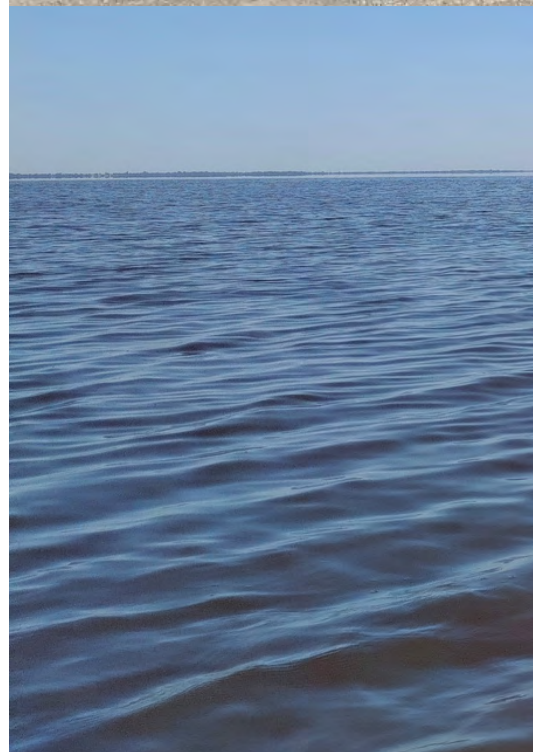
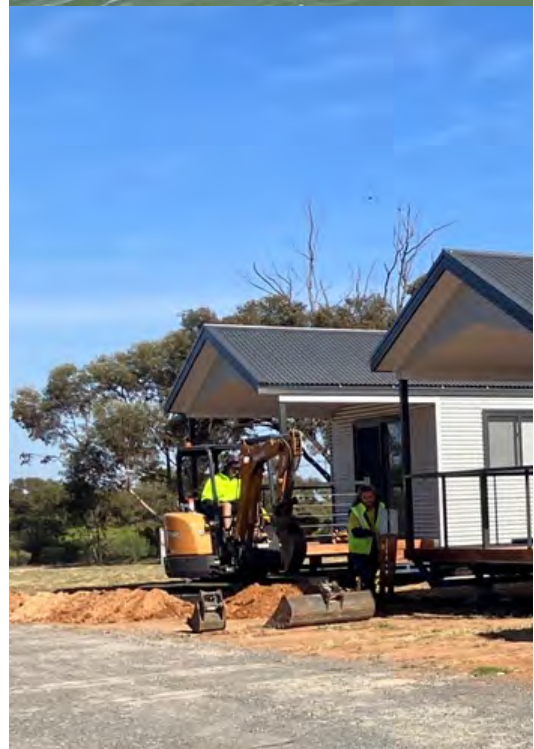
- Hindmarsh Shire Council 2021 - 2025 Council Plan
- Hindmarsh Shire Council 2024 - 2028 Economic Development Strategy
- Hindmarsh Shire 2024 - 2030 Sport and Recreation Strategic Plan (to be developed)

## Summary

There have been many successful initiatives undertaken throughout the Shire that have been identified by the community through community planning processes. The timing of the implementation of the initiatives is dependent upon several factors including the size and complexity of the project and the availability of funding.

The following are examples of some of the initiatives undertaken following their identification and prioritisation through community consultation and planning processes.

- Establishment of a Community Hub in Rainbow (The Oasis) located at the former Rainbow Primary School.
- Establishment of a recreational lake in Rainbow (Rainbow Lake) at a former GWM Water reservoir.
- Redevelopment of the Rainbow Caravan Park.
- Establishment of an event to attract people to Rainbow (Rainbow Desert Enduro and Big Sky Festival).
- Increased and improved visitor experiences around Jeparit, e.g., Wimmera River/ Lake Hindmarsh, Wimmera Mallee Pioneer Museum and Menzies Square etc.
- Additional visitor accommodation options resulting in new cabins at the Jeparit Caravan Park.
- Improved facilities and aesthetics at the Jeparit Caravan Park and swimming hole, e.g., camp kitchen, new amenities building, retaining wall and deck and landscaping.
- Increased and up to date tourism, visitor information, promotional materials, signage etc to promote increased visitation.
- Improved facilities to the Broadway precinct through works to provide sound dampening and more components to the Jeparit Skate Park.











# COMMUNITY ACTION PLAN DEVELOPMENT PROCESS

The process used for developing the Hindmarsh Shire 2024 - 2028 Community Action Plan consisted of the following steps.

**1**

A review of the following documents.

- 2016 Dimboola Community Precinct Plan
- 2016 Nhill Community Precinct Plan
- 2016 - 2019 Jeparit Community Plan
- 2016 - 2019 Rainbow Community Plan

**2**

Community consultations were held as per the following dates to provide opportunities for individual residents to raise initiatives and aspirations for group discussions and prioritisation.

- Dimboola - 27 March 2023
- Rainbow - 28 March 2023
- Jeparit - 3 April 2023
- Nhill - 4 April 2023

Rainbow Town Committee in conjunction with the Rainbow Progress Association also conducted their own community-based survey to enable residents of Rainbow that could not attend community consultations to have their own say.

Responses from participants are included in this Community Action Plan.

**3**

Analysing data collected through the consultation process.

**4**

Writing the draft plan.

**5**

Release the draft plan for public review and comment.

**6**

Develop the final plan.

**7**

Present final plan to Hindmarsh Shire Council for endorsement.





# SNAPSHOT OF HINDMARSH SHIRE

Hindmarsh Shire covers a geographical area of 7,500km<sup>2</sup> and has a dispersed residential population of 5,691 (2021 Census data).

The four main towns in the shire (Dimboola, Jeparit, Nhill, and Rainbow) are attractive and have excellent hospitals, sporting facilities and schools.

The shire sits in Wotjobaluk country and has a long and significant history with the traditional owners of Country and their cultures with many significant sites situated around the shire.

The Western Highway passes through the shire, which provides a strategic advantage that supports the shire's largest economy, agriculture (primary and secondary), health services, manufacturing, and retail. The shire, like other areas across Victoria and Australia has suffered drought, floods, and fires in recent years and in these times of crisis, residents and communities across the shire have worked together to provide support and positive actions to overcome the heartache, inconvenience, and associated damage.

Whilst the SEIFA Index of Relative Socio-Economic Advantage and Disadvantage, rates Hindmarsh Shire in the top 10% most disadvantaged LGA's in Victoria (ranked 8 out of 80) and in the top 27% most disadvantaged in Australia, residents and communities of the shire can be comforted in the knowledge that they are resilient, innovative, have a strong work ethic and provide volunteer support that is well above the Victorian average.

It is of vital importance that Council provides opportunities to its residents and communities to raise issues, suggestions and actions that will help to improve the level of infrastructure, services, sustainability and well-being of all businesses, community organisations and residents.



# COMMUNITY INPUT

Community Planning consultation sessions were held with local community representatives and residents in Dimboola, Jeparit, Nhill, and Rainbow which were attended by around 60 community members plus Council representatives.

At each consultation session, working groups were formed to identify different initiatives or issues of concern in their respective towns and more broadly across the shire.

The initial working group process was to identify and list all ideas and issues irrespective of their feasibility for either potential short term / quick wins (1-2 years) or long term / big ticket (4 years plus) implementation.

This process identified a large and diverse range of initiatives some of which will be capable of being delivered by Council as part of its capital works program, subject to budget or external funding opportunities.

In other instances, Council will provide advocacy or facilitation support to community groups if the identified initiative falls within their control.

The following is a list of all ideas identified at the consultation sessions.



# DIMBOOLA

## LONG TERM / BIG TICKET INITIATIVES

### Group 1:

- Reduction of speed limit along Lloyd Street through CBD or inclusion of a speed hump / raised road section at pedestrian crossing points.
- Establishment of a wellness centre in the former CFA building to improve mental health, physical wellbeing, community bonding (meditation, Yoga, Pilates, Gym etc).
- Establishment of a two-story modern building with rooftop gardens, viewing deck etc with views towards the river and township.
- Installation of CCTV to increase street security and safety.

### Group 2:

- Establishment of an Indigenous Keeping Place.
- Establishment of a Neighbourhood House.
- Increased lighting on walking tracks.

### Group 3:

- Increased maintenance at Dimboola Swimming Pool including use of the solar blanket and all-abilities changerooms.
- Development of masterplan for Dimboola Football clubrooms / changerooms and Dimboola Recreation Reserve.
- Increased Council staff to maintain parks and gardens.
- Development of official Visitor Information Centre.
- Continued updating of Visit Hindmarsh website.

## SHORT TERM / QUICK WIN INITIATIVES

### Group 1:

- Construction of concrete footpaths throughout Dimboola – at least one on every street.
- Construction of public toilets at Tower Park.
- Establishment of an Indigenous Keeping Place in the former CFA building.
- Installation of community notice boards.
- Installation of rubbish bins at tourism destinations.
- Increased shelter at the bus stop – or relocate the bus stop.
- Council to approach shop owners to smarten up shop fronts.
- Establish larger residential blocks for purchase.
- Establish a backpackers accommodation building at the RHP.

### Group 2:

- Install an ice machine at RHP.
- Establish a shelter at the former pony club site and install a plaque in recognition of it.
- Establish a dog off leash park.
- Reduce speed limit through Lloyd Street CBD.
- Establish a community garden.
- Install a street piano / encourage buskers or street entertainment.
- Increase street beautification by installing tubs / pots / flowers / plants etc.
- Creation of more street art.
- Art exhibitions in Library / Old Shire Hall.
- Increased tree planting and watering.
- Beautification of High Street entrance into Dimboola.
- Installation of a screen at the bus shelter.
- Green waste bins
- Fix or replace the lights on Wimmera Street bridge.
- Top-dress walking tracks with quarry dust.
- All-ability parking in front of Wimmera Bakery in Lloyd Street does not have all-ability access to the footpath.

### Group 3:

- Council support for the Men's Shed through promotion etc.
- Streetscape beautification, trees and plants etc.
- Lighting of trees in Lloyd Street.
- Install re-charge stations for phones, i-pads etc in dining pods.
- Establishment of an Urban Landcare Group.



## LONG TERM / BIG TICKET INITIATIVES

### Group 1:

- Replacement of Jeparit Weir.
- Re-use the old Council mechanics workshop for other purposes - e.g., start-up businesses etc.
- Charles Street - trucks (Assume to detour trucks away from Charles Street)
- Improve walking tracks route.
- Construction of more footpaths throughout Jeparit.
- Keep the Jeparit swimming pool open.
- Install a swimming pontoon at the Jeparit Swimming Hole.
- Construction of a new shed that is lined internally and used for supermarket, café, newsagents, and post office.
- Improve visual aesthetics of entry into Jeparit by mowing grass, removing old cars and furniture etc.
- Increase / retain, childcare / kindergarten and after school care.
- Redevelop the Tennis Club / courts as part of redevelopment of the Jeparit Caravan Park.

### Group 2:

- Construction of new tennis courts.
- Construct new netball change rooms.
- Beautify Jeparit streetscapes.
- Construct toilets at the skate park in Broadway.
- Increase the level of street art around Jeparit.
- Establish a visitor centre in Roy Street.
- Maintain water levels in Lake Hindmarsh.

### Group 3:

- Redevelop the Tennis Club / courts as part of redevelopment of the Jeparit Caravan Park.
- Establish and implement a streetscape plan for Roy Street.
- Improve tourism signage - natural and heritage-based assets.
- Replace synthetic surface at the Jeparit Bowling Club and increase shade areas.
- Promotion of healthy living for community and social well-being.
- Construction of toilets at the skate park.

## SHORT TERM / QUICK WIN INITIATIVES

### Group 1:

- Installation of street furniture
- Shade sail over playground in the recreation reserve.
- Signage at the RV Dump Point to advertise local attractions e.g., WMPM and other improvements - landscaping, filling in of potholes etc.
- Improved streetscapes - bin wraps, metal art etc.
- Re-painting of parking bays.
- Enforce removal of un-registered and dumped cars from streets and houses etc.
- Another power pole at the caravan park?

### Group 2:

- Bike pump / BMX track - rec reserve / tennis courts.
- Improve the walking track from WMPM to the Swimming Hole as part of the WRDT.
- Swimming pontoon at new deck at Swimming Hole.
- Toilet at the skate park.
- Landscape the Jeparit Swimming Hole area with local native trees, flowering plants and shrubs and art sculptures.
- Establish musical and arts festivals.
- Collaborative community arts projects (mosaic birds) / community garden.

### Group 3:

- Construction of a swimming pontoon at the swimming hole.
- Landscape and improve RV Dump Point.
- Install solar heating and improve shade at the swimming pool.
- Re-open the Men's Shed.



## LONG TERM / BIG TICKET INITIATIVES

### Group 1:

- Continued redevelopment of Davis Park.
- Continued redevelopment of Nhill Lake.
- Continued redevelopment of the Nhill Caravan Park.
- Continued redevelopment of Victoria Street, Nhill.

### Group 2:

- Establish commercial industries at Nhill Aerodrome.
- Establish a dog off leash park in Nhill.
- Establish a bike track (Aerodrome / Nhill Lake).
- Establish a BMX / Pump Track between Nhill College and the tennis courts.
- Encourage community driven expansion of the NAHC.
- Continued redevelopment of Davis Park.
- Continued redevelopment of the Nhill Caravan Park.

## SHORT TERM / QUICK WIN INITIATIVES

### Group 1:

- Continue redevelopment of Davis Park to include a community hub.
- Establish a Cane Ball / Volleyball court at Davis Park or elsewhere.
- Develop vacant land next to the Police Station as a hospital car park.
- Establish freight routes throughout the shire.
- Retain water in Nhill Lake all year round.
- Re-establish the Friday Fiestas.
- Refurbish the bird hide on the boardwalk in the Nhill Swamp.

### Group 2:

- Establish a dog off leash park in Nhill.
- Improve tourism signage around Nhill and the shire.
- Review location of community noticeboard in Goldsworthy Park.
- Establish incentives to retain / attract businesses, e.g., Luv-a-Duck.
- Establish a marketing strategy to brand the town of 'Nhill'.
- Re-establish the Business Nhill organisation.
- Increase / improve Motel accommodation options in Nhill.





# RAINBOW

## LONG TERM / BIG TICKET INITIATIVES

### Group 1:

- Increased rental accommodation options for visiting professionals, contractors and labourers .
- Improved footpaths and drainage in Winifred Street.
- Establishment of an industrial estate.
- Sub-division for residential development including larger lifestyle blocks.

### Group 2:

- Truck parking facilities with shower and toilets (railway yard).
- Walking track to Rainbow Lake including under road pedestrian / bike crossing.

### Group 3:

- Provide truck and caravan parking close to town (eg railway yards) with toilets and showers etc.
- Recreational bike facilities including bunk house type accommodation.
- Establish Rainbow as an off-grid town – solar, wind etc.
- Combined kindergarten, childcare and intergenerational centre.

### Group 4:

- Under road pedestrian / bike crossing as part of the walking track to Rainbow Lake.
- Establishment of a 'Desert Eco Lodge and Desert Eco Tours'.
- Continued support for Big Sky Festival.
- Facilitate / advocate steam train groups tours to Rainbow from Dimboola.
- Establishment of community transport options to assist elderly / disabled with appointments etc.

### Group 5:

- Increased maintenance for the MECCA.
- Redevelop entrance to the Recreation Reserve.
- Construct new football change rooms.
- Visitors parking at Llew Schilling silo.
- Establish heavy vehicle by-pass.
- Improvements to amenities at Lake Albacutya.
- Establishment of a tourism trail – Pella / Albacutya Silo.
- Promote Rainbow as a 'work from home' destination.
- Continued advocacy for funding for better roads.

## SHORT TERM / QUICK WIN INITIATIVES

### Group 1:

- Walking / bike path to Rainbow Lake.
- Training for community leaders.
- Improved access to 'The Oasis' and installation of an all-abilities toilet.
- Subsidised community pensioner firewood program.
- Subsidised roof / gutter cleaning service (voucher system).
- Increased promotion of Rainbow to attract visitors.

### Group 2:

- Improved caravan visitor parking.
- Establishment of a pump track at the Recreation Reserve.
- Improved amenities and facilities at Western Beach / Lake Albacutya.
- Incentives to beautify local empty shop fronts.
- Redevelop old Council offices into all-ability toilet and baby change place.
- Repair door into ladies' public toilet at the MECCA to stop it 'banging'.
- Maintain nature strip trees to keep them alive.

### Group 3:

- Reduce speed limit to 40kph / 50kph in Taverner Street.
- Improvements to Rainbow Rises Road by sealing entries into GrainCorp and Rainbow Rises Events Centre.
- Improve drainage infrastructure in Bow Street at the railway crossing.

### Group 4:

- Improvements to the Rainbow Swimming Pool including increased maintenance and improved accessibility.
- Improve parking bays in Federal Street including provision of all-ability car parks.
- Improve signage for the Rainbow Caravan Park.
- Increased levels of gutter and culvert cleaning.

### Group 5:

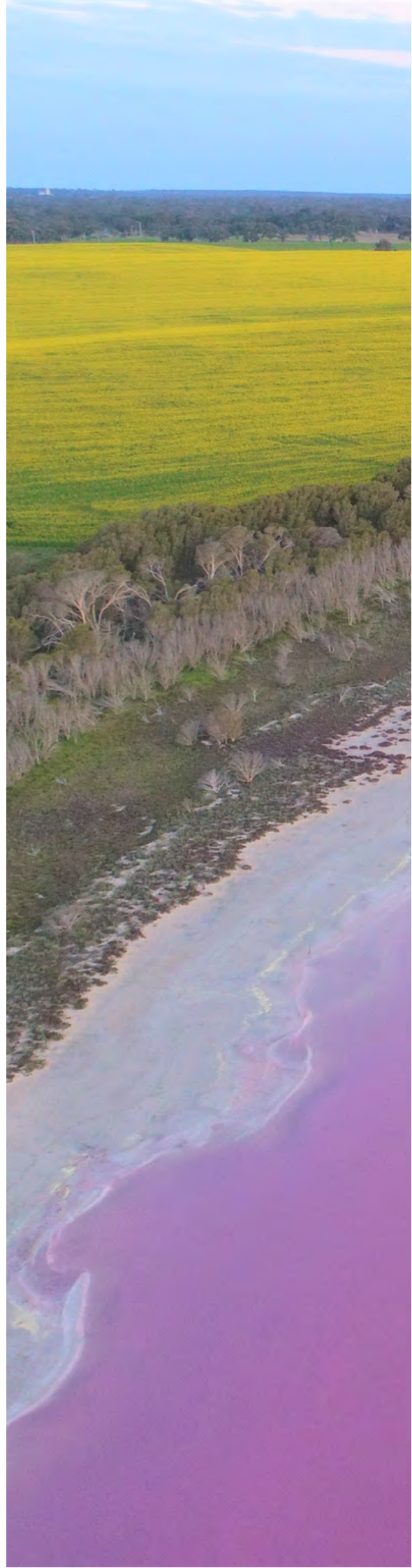
- Establish an information centre in the old Council offices.
- Establish farm stays, farm tours and harvest tours etc.
- Increase level of information to the community about the Llew Schilling silo development.
- Increased kerbing, gutter and sealed road infrastructure in Rainbow.

In addition to the community consultations that provided the above information, the Rainbow Town Committee conducted their own survey aimed at obtaining responses from residents who were unable to attend the community consultation sessions.

The following is a summary of the responses received from the residents of Rainbow who contributed to the survey.

1. Most respondents have positive views about living in Rainbow.
2. Most respondents want to see the town's infrastructure improved and economic development occur.
3. Some referred to the relative isolation of Rainbow, in terms of distance from a major regional centre, as a positive and said that this underlines the need for the town continue to grow.
4. Younger respondents see these issues as priorities:
  - a. Walking and cycling access around the town and out to the Rainbow Lake
  - b. Improved healthcare and childcare services
  - c. New Football Changerooms
  - d. Improved roads in the district
  - e. Land for housing, residential and rural residential, and for businesses
  - f. More events such as the Big Sky Festival that benefit residents and attract tourists.
5. The elders who responded provided detailed views on what the town needs. Their focus was on improvements in Federal Street, including The Mecca, and on welcoming new residents, and tourists. They also supported the need for housing and land for businesses.

The Dimboola Town Committee, Dimboola Football Netball Club, and Dimboola Rowing Club have previously advocated to Council to seek funding for the establishment of an extensive, broad-based master plan for the Dimboola Recreation Reserve. Whilst the redevelopment of facilities within the Dimboola Recreation Reserve was identified in the above list for Dimboola, the establishment of a master plan is widely considered as a priority for the broader community.







# PRIORITY PROJECTS AND ACTION PLANS

Following this initial process each working group was then asked to short list and prioritise ideas and issues taking various aspects into consideration. For this process, a matrix utilising the following descriptions was utilised.

- Initiatives that have strong and long-term impact but require more effort to achieve.
- Initiatives that have immediate impact and make a difference but are easy to implement.
- Initiatives that have little value and are difficult to implement and are resource intensive.
- Initiatives that have little impact or value but are easy to implement.

## Key

|        |                |
|--------|----------------|
| Short  | <2 years       |
| Medium | <5 years       |
| Long   | >5 years       |
| TBA    | To be assessed |

The timeframe listed in the table indicates how long the project may take to deliver once it has been identified for implementation.

**High-impact** initiatives will be considered in the development of Council's annual budget and Council Plan (and annual Action Plans) and will drive funding applications as grant opportunities arise.

Actions that are identified as **immediate** will be considered at the earliest possible opportunity, where resources allow and in line with a priority assessment against other projects and initiatives.

Council will publish a progress report on the Action Plan annually.

# PRIORITISED STRONG LONG TERM / HIGH IMPACT INITIATIVES

| Location | Initiative  | Responsible (Council/Community /Other) | Council Role        | Time Frame | Cost Est. |
|----------|---|--|---------------------|------------|-----------|
| Dimboola | Establishment of a wellness centre in the former CFA building to assist with community wellbeing, mental health and exercise. | Other                                  | Support             | TBA        | TBA       |
|          | Establishment of a two-story building with roof top access for bar, viewing, etc.   | Community                              | Support             | TBA        | TBA       |
|          | Establishment of a community garden.  | Community                              | Support             | TBA        | TBA       |
|          | Establishment of a Neighborhood House.  | Community                              | Support             | TBA        | TBA       |
|          | Complete lighting on walking tracks and replace the lights on the Wimmera Street bridge.                                      | Council                                | Deliver             | Short      | \$50,000  |
|          | Establish an Indigenous Keeping Place.  | Other                                  | Advocate/Facilitate | TBA        | TBA       |
|          | Establishment of at least one concrete footpath in every street in Dimboola.  | Council                                | Deliver             | Long       | \$500,000 |
|          | Establishment of a master plan for the Dimboola Recreation Reserve.   | Council                                | Deliver             | Short      | \$100,000 |
|          | Establishment of an accredited Visitor Information Centre (potentially in conjunction with the Indigenous Keeping Place).     | Council                                | Deliver             | Long       | \$200,000 |
|          | Establishment of backpacker accommodation.  | Other                                  | Support             | TBA        | TBA       |
|          | Development of residential housing land.  | Other                                  | Advocate/Support    | Medium     | TBA       |
|          | Replacement of the Jeparit Weir.  | Council                                | Advocate/Deliver    | Medium     | \$3.5M    |
| Jeparit  | Charles Street - trucks (Assume to detour trucks away from Charles Street)  | Council                                | Advocate/Support    | Medium     | TBA       |
|          | Improve walking tracks route with all-weather surface - suitable for bikes.   | Council                                | Deliver             | Short      | \$200,000 |
|          | Construction of more footpaths throughout Jeparit.  | Council                                | Deliver             | Long       | \$300,000 |
|          | Keep the Jeparit swimming pool open for longer hours and install solar heating and additional shade.                          | Council                                | Deliver             | Medium     | \$60,000  |

# PRIORITISED STRONG LONG TERM / HIGH IMPACT INITIATIVES

| Location | Initiative  | Responsible (Council/Community/Other) | Council Role     | Time Frame | Cost Est. |
|----------|---|---------------------------------------|------------------|------------|-----------|
| Jeparit  | Redevelop the Tennis Club / courts as part of redevelopment of the Jeparit Caravan Park.  | Council                               | Deliver          | Medium     | \$1M      |
|          | Improve visual aesthetics of entry into Jeparit by mowing grass, removing old cars and furniture etc.   | Council                               | Deliver          | Short      | \$100,000 |
|          | Construct a bike pump / BMX track at the rec reserve or tennis courts.  | Council                               | Deliver          | Long       | TBA       |
|          | Improved streetscape aesthetics throughout Jeparit.   | Council/Community                     | Deliver/Support  | Short      | TBA       |
|          | Relocate the skate park to the Recreation Reserve or the Swimming Hole precinct and include a multi-use concrete hard stand for other activities. | Council                               | Deliver          | Long       | \$60,000  |
|          | Establish a streetscape masterplan.   | Council                               | Deliver          | Short      | \$50,000  |
| Nhill    | Continued staged redevelopment of Davis Park infrastructure and facilities.   | Council                               | Deliver/Advocate | Long       | \$5M+     |
|          | Continued redevelopment of Nhill Lake.  | Community                             | Advocate/Support | Medium     | TBA       |
|          | Develop vacant land next to the Police Station as a hospital car park.  | Community/Other                       | Advocate/Support | Medium     | TBA       |
| Rainbow  | Establishment of a 'Desert Eco Lodge and Desert Eco Tours'.   | Community/Other                       | Support          | Long       | TBA       |
|          | Establishment of community transport options to assist elderly / disabled with appointments etc.  | Community/Other                       | Support          | Short      | TBA       |
|          | Advocate to reduce speed limit to 40kph / 50kph in Taverner Street.   | Council/Community                     | Advocate/Support | Short      | TBA       |
|          | Truck parking facilities with shower and toilets (e.g. railway yard).   | Community/Other                       | Advocate/Support | Medium     | TBA       |
|          | Construction of new football change rooms.  | Council/Community                     | Deliver          | Short      | \$1.5M    |
|          | Establish heavy vehicle by-pass.  | Council/Other                         | Advocate/Support | Long       | TBA       |
|          | Increased maintenance for the MECCA - including toilet upgrades.  | Council                               | Deliver          | Short      | \$100,000 |
|          | Establishment of an industrial estate.  | Council/Other                         | Deliver/Support  | Long       | TBA       |

# PRIORITISED STRONG LONG TERM / HIGH IMPACT INITIATIVES

| Location | Initiative  | Responsible (Council/Community/Other) | Council Role             | Time Frame     | Cost Est. |
|----------|---|---------------------------------------|--------------------------|----------------|-----------|
| Rainbow  | Increased kerbing, gutter and sealed road infrastructure in Rainbow, including Winifred Street.               | Council                               | Deliver                  | Medium/Ongoing | TBA       |
|          | Improvements to the Rainbow Swimming Pool including increased maintenance and improved accessibility.         | Council                               | Deliver                  | Short/Ongoing  | TBA       |
|          | Establish Rainbow as an off-grid town – solar, wind etc.  | Community/Other                       | Support                  | Long           | TBA       |
|          | Combined kindergarten, childcare and intergenerational centre.  | Council/Community                     | Deliver/Advocate/Support | Long           | TBA       |
|          | Walking track to Rainbow Lake including under road pedestrian / bike crossing / or safe road crossing option. | Council/Community                     | Deliver/Support          | Short          | TBA       |
|          | Increased worker rental accommodation options including for health care employees.                            | Council/Other                         | Deliver/Advocate/Support | Short          | \$500,000 |



# PRIORITISED STRONG IMMEDIATE (SHORT TERM) / HIGH IMPACT INITIATIVES

| Location                    | Initiative   | Responsible (Council/Community/Other) | Council Role             | Time Frame    | Cost Est. |
|-----------------------------|--|---------------------------------------|--------------------------|---------------|-----------|
| Dimboola                    | Promotion of Men's Shed to attract more members / participants.  | Community                             | Support                  | Six months    | TBA       |
|                             | Feature lighting of Lloyd Street trees.  | Community                             | Support                  | Six months    | TBA       |
|                             | Reduction of speed limit between Wimmera and Lochiel Streets.  | Council                               | Advocate                 | Immediate     | TBA       |
|                             | Installation of an ice machine / freezer at Riverside Holiday Park.  | Council/Other                         | Deliver/Support          | Immediate     | TBA       |
|                             | Supply and installation of a street piano.   | Community/Other                       | Support                  | Twelve months | TBA       |
|                             | Installation of permanent art works in the library.  | Council                               | Deliver                  | Immediate     | \$3,000   |
|                             | Utilisation of former CFA Building for community use.  | Council/Community/Other               | Deliver/Advocate/Support | Twelve months | TBA       |
|                             | Establishment of a proper information centre.  | Council                               | Deliver                  | Twelve months | TBA       |
|                             | Installation of community notice boards.   | Council                               | Deliver                  | Six months    | \$5,000   |
|                             | Installation of additional rubbish bins at tourism destinations.   | Council                               | Deliver                  | Twelve months | TBA       |
|                             | Increased shade at the bus shelter   | Council                               | Deliver                  | Immediate     | TBA       |
| Decorate empty shop fronts. | Community/Other  | Support                               | Immediate                | TBA           |           |
| Jeparit                     | Collaborative community / street arts projects (mosaic birds).   | Community                             | Support                  | Six months    | TBA       |
|                             | Enforce removal of un-registered and dumped cars from streets and houses etc and enforce yards to be tidied / mowed etc. | Council                               | Deliver                  | Immediate     | TBA       |
|                             | Re-painting of parking bays.   | Council                               | Deliver                  | Immediate     | TBA       |
|                             | Swimming pontoon at new deck at Swimming Hole.   | Council                               | Deliver                  | Twelve months | \$100,000 |
|                             | Improved streetscapes - bin wraps, metal art, etc.   | Council/Community                     | Deliver/Support          | Twelve months | \$50,000  |

# PRIORITISED STRONG IMMEDIATE (SHORT TERM) / HIGH IMPACT INITIATIVES

| Location | Initiative  | Responsible (Council/Community /Other) | Council Role      | Time Frame    | Cost Est. |
|----------|---|--|-------------------|---------------|-----------|
| Jeparit  | Landscape and improve RV Dump Point (student art).  | Council/Community                      | Deliver/Support   | Immediate     | \$5,000   |
|          | Establish musical and arts festivals - New Years Eve concert at the Swimming Hole.                            | Council/Community                      | Deliver/Support   | Twelve months | \$10,000  |
|          | Keep the Jeparit swimming pool open and for longer periods during the season.                                 | Council/Other                          | Deliver/ Advocate | Twelve months | TBA       |
|          | Re-open the Men's Shed.   | Community                              | Support           | Twelve months | TBA       |
| Nhill    | Establish a dog off leash park in Nhill.  | Council/Community                      | Deliver/Support   | Six months    | \$50,000  |
|          | Improve tourism signage around Nhill and the shire.   | Council/Community                      | Deliver/Support   | Twelve months | TBA       |
|          | Continued redevelopment of the Nhill Caravan Park.  | Council                                | Deliver/ Advocate | Immediate     | TBA       |
|          | Continued redevelopment of Victoria Street, Nhill.  | Council/Community                      | Deliver/Support   | Immediate     | TBA       |
| Rainbow  | Walking track to Rainbow Lake including under road pedestrian / bike crossing / or safe road crossing option. | Council/Community                      | Deliver/Support   | Twelve months | TBA       |
|          | Improved all-ability access in to / out of the Rainbow Swimming Pool e.g., 'lifting chair / hoist'.           | Council                                | Deliver           | Immediate     | TBA       |
|          | Continued support for the Big Sky Festival at The Oasis.  | Council                                | Deliver           | Immediate     | TBA       |
|          | Continued advocacy for funding for better roads.  | Council                                | Deliver           | Twelve months | \$100,000 |
|          | Improve signage for the Rainbow Caravan Park.   | Council/Community                      | Deliver/Support   | Twelve months | \$50,000  |
|          | Increased levels of gutter and culvert cleaning.  | Council/Community                      | Deliver/Support   | Immediate     | \$5,000   |
|          | Improve parking bays in Federal Street including provision of all-ability car parks.                          | Council/Community                      | Deliver/Support   | Twelve months | \$10,000  |

# PRIORITISED STRONG IMMEDIATE (SHORT TERM) / HIGH IMPACT INITIATIVES

| Location | Initiative   | Responsible (Council/Community /Other) | Council Role      | Time Frame    | Cost Est. |
|----------|--|--|-------------------|---------------|-----------|
| Rainbow  | Establishment of a tourism trail - Pella / Albacutya Silo.   | Council/Other                          | Deliver/ Advocate | Twelve months | TBA       |
|          | Establish visitors parking at Llew Schilling silo.   | Council                                | Deliver           | Twelve months | TBA       |
|          | Redevelop entrance to the Recreation Reserve.  | Council                                | Deliver           | Twelve months | TBA       |
|          | Promote Rainbow as a 'work from home' destination.   | Council/Community                      | Deliver/Support   | Twelve months | TBA       |
|          | Establish an information centre in the old Council offices / increase tourism promotion in local businesses e.g., Service Station, Café etc. | Council                                | Deliver           | Six months    | TBA       |
|          | Advocate to reduce speed limit to 40kph / 50kph in Taverner Street.  | Council/Community                      | Advocate/ Support | Six months    | TBA       |
|          | Improved vehicle /caravan visitor parking.   | Council                                | Deliver           | Immediate     | TBA       |
|          | Establishment of a pump / BMX track at the Recreation Reserve.   | Community                              | Support           | Six months    | TBA       |
|          | Improve public toilets facilities - including at The Oasis, MECCA, Lake Albacutya, Swimming Pool.  | Council/Other                          | Deliver/ Advocate | Twelve months | TBA       |
|          | Subsidised community pensioner firewood program.   | Community                              | Support           | Twelve months | TBA       |



---

**Main Office:**  
92 Nelson Street  
NHILL VIC 3418

**Phone:** 03 5391 4444

**Email:** [info@hindmarsh.vic.gov.au](mailto:info@hindmarsh.vic.gov.au)

**Postal Address:**  
PO Box 250  
NHILL VIC 3418

**Website:** [www.hindmarsh.vic.gov.au](http://www.hindmarsh.vic.gov.au)

**Facebook:** [www.facebook.com/hindmarshshirecouncil](http://www.facebook.com/hindmarshshirecouncil)